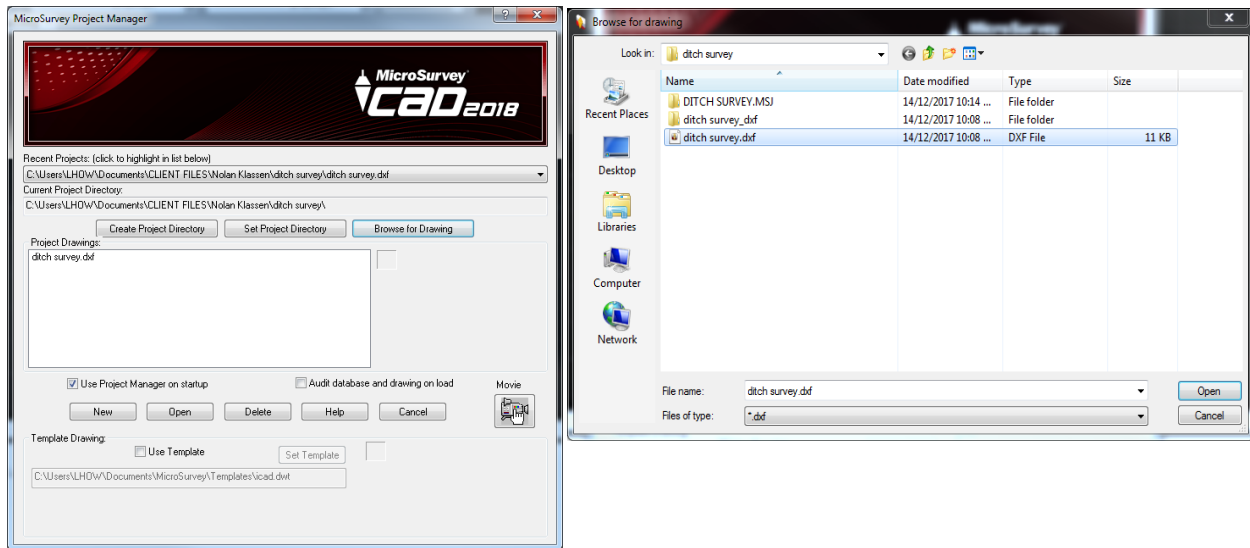


## Steps to Producing a Profile Report

### 1. Import File into project

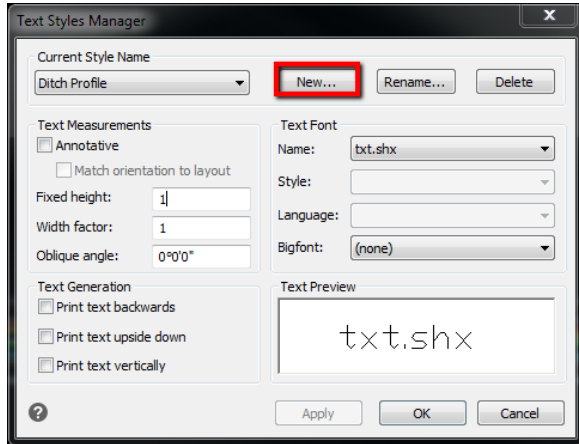
- From the Project Manager select “browse for drawing”
- browse to the file you are wanting to work with and open it
- Be sure to select the type of file of you importing in the pull down menu next to “Files of Type” or you will not be able to see the file you want to select.

In this example we are importing a .dxf



### 2. Once your points are imported you'll want to create a new style name for your text

- Head to MsAnnotate>Defaults>Text Style Manager
- Once in the Text Style Manager you will want to create a NEW style name that's not the default named Standard and make the fixed height something other than 0
- You can name it whatever you wish. I have changed mine to Ditch Profile and made my fixed height 1 for this example



### 3. Now we can run the MsFlatten command

- in your command line type “msflatten”
- select your FIRST entity you want to profile then press “enter”
- It will now prompt you to enter the information on how you want it plotted.  
Such as:

1. Vertical Multiplier- the factor you want your elevations to be exaggerated by
2. Base Elevation for Grid- starting elevation of your profile
3. Draw Background grid – do you want to plot the grid?
4. Vertical Spacing- interval you want your vertical plot to be
5. Vertical Labeling Interval- interval you want for vertical labelling
6. Horizontal Spacing – interval you want your horizontal plot
7. Horizontal Vertical Spacing- interval for horizontal labels
8. Select Origin Point- Where you would like to place your grid.

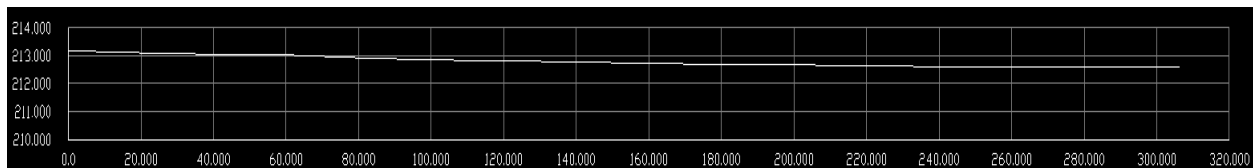
The picture below represents the prompts that come up in the command line and what I have set them to for the example.

```

Command: MSFLATTEN
Filter/<Select entities>:
Entities in set: 1
Filter/<Select entities>:
Vertical multiplier <1.000>: 5
Base elevation for grid/Auto <Auto>:210
Draw a grid background <Yes>:
  Vertical spacing <0.050>: 1
  Vertical labeling interval <2>: 1
  Horizontal spacing <10.000>: 20
  Horizontal labeling interval <5>: 1
Select origin point:
Command:
Auto saving open drawings...
.....
Auto save complete. 17 files were compressed.
.....
Auto save complete. 17 files were compressed.
Command:

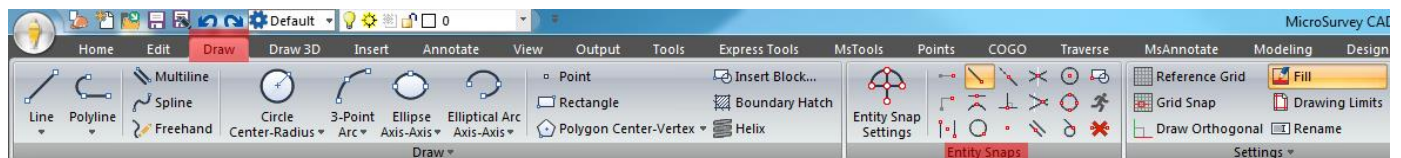
```

You should now see in your drawing your first plotted profile.



4. We can now start plotting the next profile

- First we want to turn snaps on go to Draw> Entity Snaps> End point



- Run Msflatten again and select your next entity you want to profile
- The settings this time will be tweaked this time

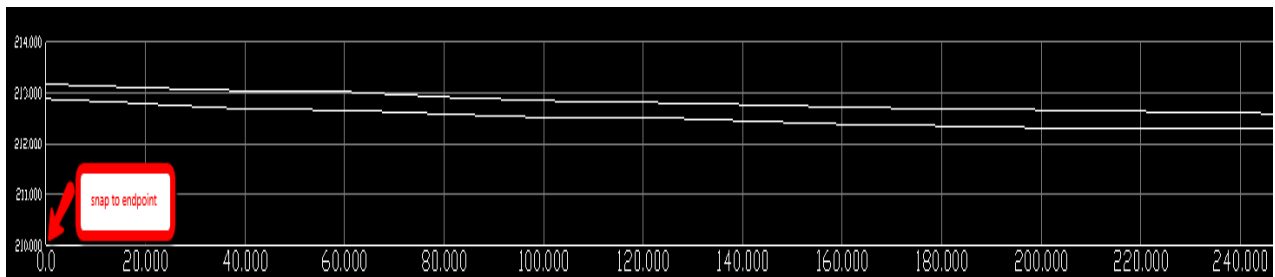
- The highlighted section shows that this time we DON'T want to draw a grid background and we want to snap to the ENDPOINT of the grid we already have, where X and Y intersect.

```

Command: MSFLATTEN
Filter/<Select entities>:
Opposite corner:
Filter/<Select entities>:
Entities in set: 1
Filter/<Select entities>:
Vertical multiplier <1.000>: 5
Base elevation for grid/Auto <Auto>:210
Draw a grid background <Yes>: no
Select origin point: _ENDPOINT
Snap to END of:

```

Your drawing should now have 2 profile lines in the grid



5. To avoid confusion in the profile. We can individually select each line and change the color.

After selecting the line you would like to change, you can change the color in the pulldown menu of the Entity Properties toolbar



6. If you want to add more sets of data into the same profile Repeat step 4 with the MsFlatten command

- Key things to remember is NO for “draw grid background”
- Snap to the End point of where X and Y axis intersect

Here is an example of a finished Profile with 4 entities looks like with the colors modified

