

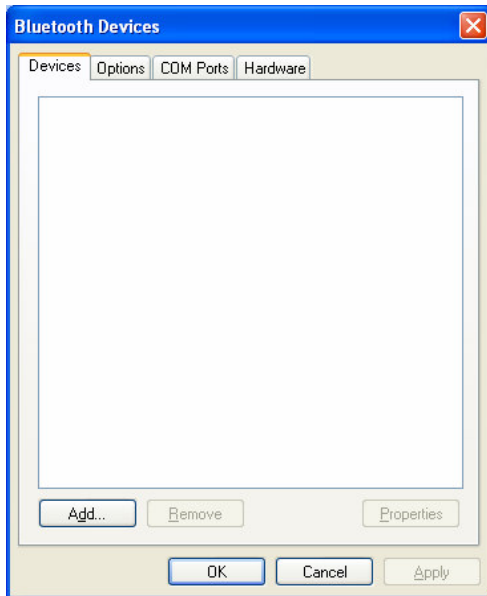
## Tracker Xtreme – Bluetooth ActiveSync

Tested With: WindowsXP with AmbiCOM USB Dongle (no drivers were installed) & Tracker Xtreme with built-in Bluetooth

### Configure the Bluetooth Settings on your PC

Click on the Bluetooth Icon (in the system tray), then click on Open Bluetooth Settings. If the Bluetooth icon is not in your system tray, then go to the Control Panel to Bluetooth Devices.

#### Devices tab

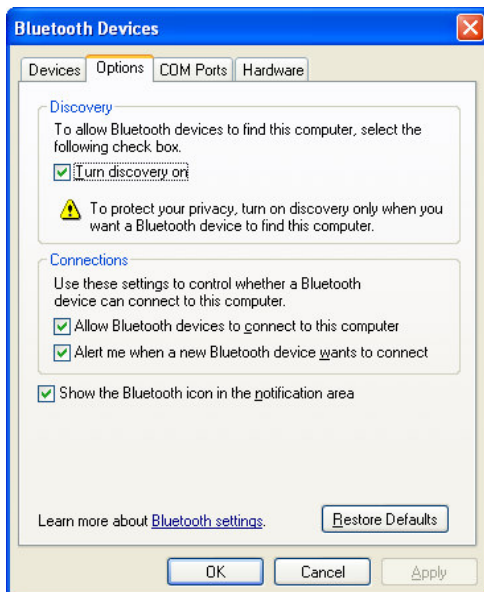


Click on the Devices tab.

Your Tracker (or other Bluetooth devices) may be listed here if you have previously Added or Connected to something.

It is not necessary to Add (Discover) the Tracker, this screen can remain blank.

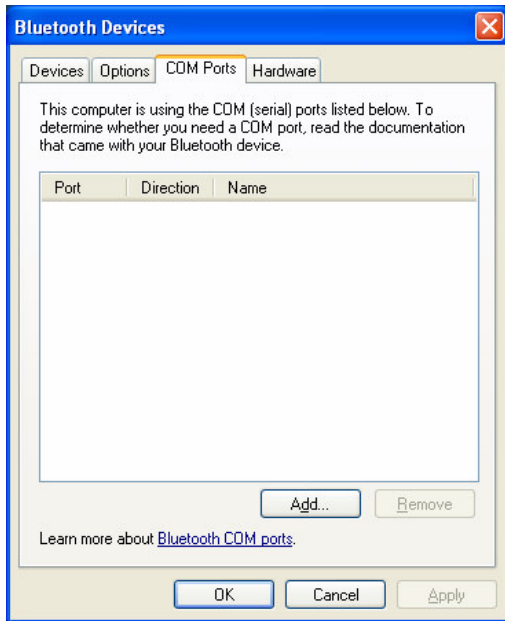
#### Options tab



Click on the Options tab.

Make sure all four options are turned on then click Apply.

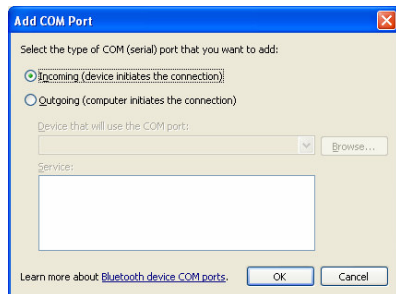
## COM Ports tab



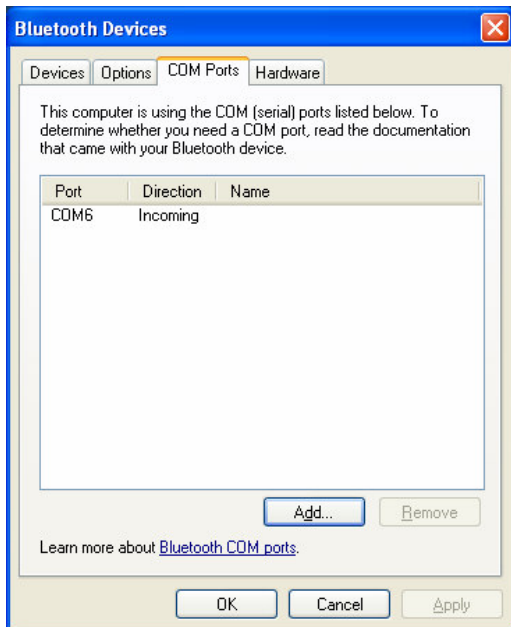
Click on the COM Ports tab.

We will need to create an Incoming COM Port to use with ActiveSync. If one is already listed, great, just make a note of the COM Port Number listed for use later.

If an Incoming COM Port is not listed, then press the Add button to create one.

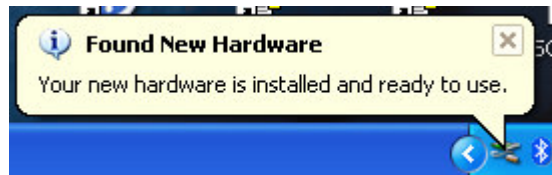


Select "Incoming (device initiates the connection)" then click OK.



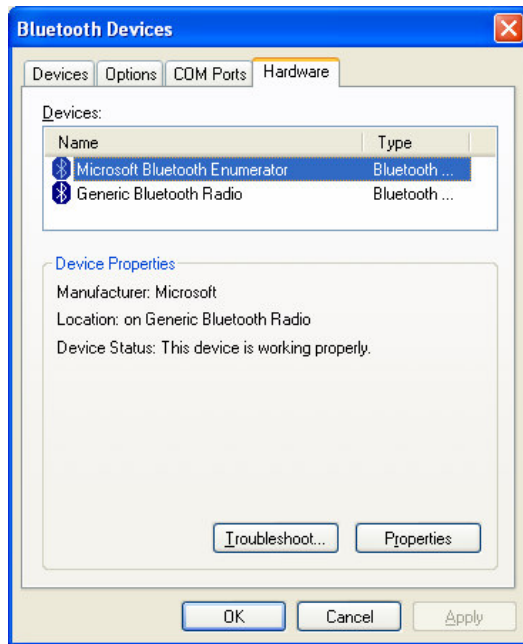
After a few moments you will see an Incoming COM Port listed.

This may take several seconds, while the port is being created. You may see some information bubbles pop up on your System tray while this is happening, such as:



We will need this COM port number in the next step, so make a note of it (COM 6 in this example) then click Apply.

## Hardware tab



Nothing needs to be done on the Hardware tab, so you can ignore this tab.

Click OK.

*Depending on your Bluetooth drivers, the previous screens may be different than what you see. However, the basic procedure will be the same, make sure that there is a Bluetooth COM Port setup to use ActiveSync with.*

## Configure ActiveSync on your PC



Click the ActiveSync icon in your system tray, and choose Connection Settings.

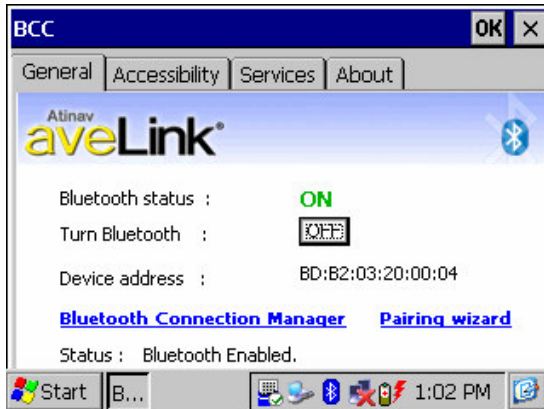
Make sure "Allow connections to one of the following" is selected, and choose the COM Port we created in the previous step.

(Note: Screenshot is from ActiveSync 4.1, if you have a different version then this screen may be slightly different, but you must select your appropriate COM Port.)

## Configure your Tracker

Nothing specific needs to be configured on the Tracker, just make sure that the Bluetooth transmitter is turned on. (Click the Bluetooth icon in the system tray, then press the ON button.)

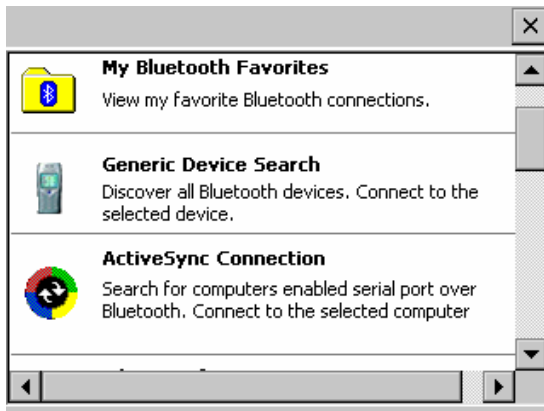
## Connect the Tracker to Bluetooth ActiveSync



Press the Windows button on your keypad to bring up the start menu then click on the Bluetooth Icon in the system tray near the clock to bring up the Bluetooth status screen.

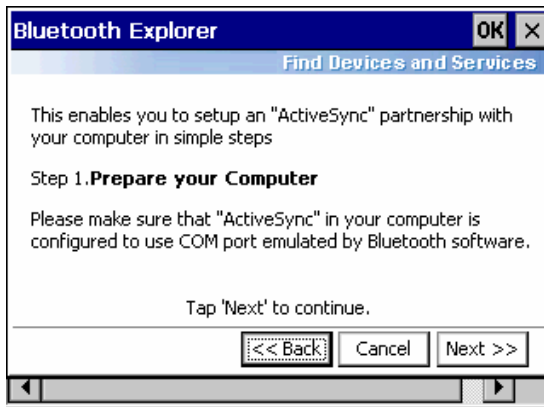
If this screen indicates that Bluetooth is off, just press the ON button.

Then click the “Bluetooth Connection Manager” link.

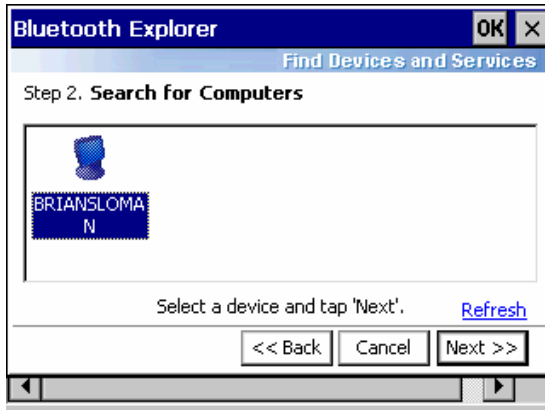


Click on “ActiveSync Connection” to detect your computer’s ActiveSync connection. Then just follow the instructions presented on the screen.

*(Once we get this set up, you will be able to skip the rest of this section and quickly connect to it by clicking on “My Bluetooth Favorites” and then selecting your PC.)*

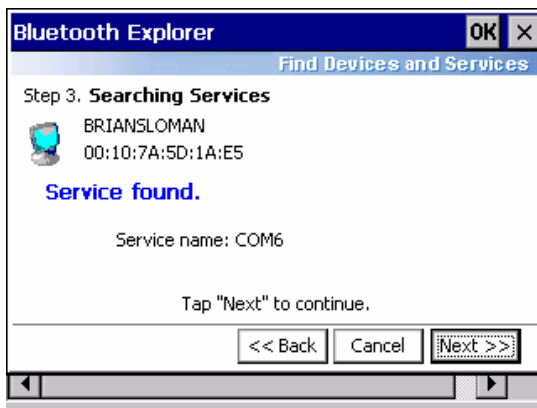


Press Next.

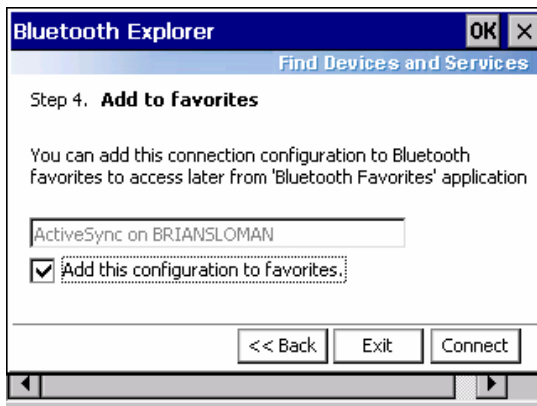


Select your Computer then press Next.

*You may see other Bluetooth devices listed here as well, depending on what else is within range of the transmitter.*



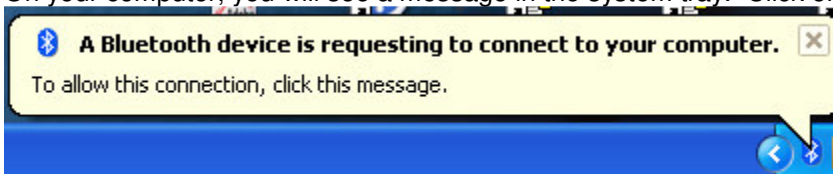
Press Next.



Turn on the “Add this configuration to favorites” option then click Connect.

*Once your connection is added to the favorites, then you can use “My Bluetooth Favorites” instead of the “ActiveSync Connection” to quickly connect to it.*

On your computer, you will see a message in the system tray. Click on this message.



After clicking the above message, you will be asked to set a password to use. Type your desired password into the Passkey field (you can not leave it blank) then click Next.

The Tracker will then ask you to enter the password you just set. Type it in then tap Reply.



On your computer, uncheck the “Turn discovery off” option then click Finish.