

Trimble 5600 Direct Connection

Confirm Settings

Firmware Versions

To check your firmware version, press Menu 5, 4, 1.

Note: These are the firmware numbers of the instrument we used during testing:

Trimble 5600 DR200+ (Station Mode) – Firmware version 696-03.08

Radio Version: 626-08.00 “2.4 GHz”

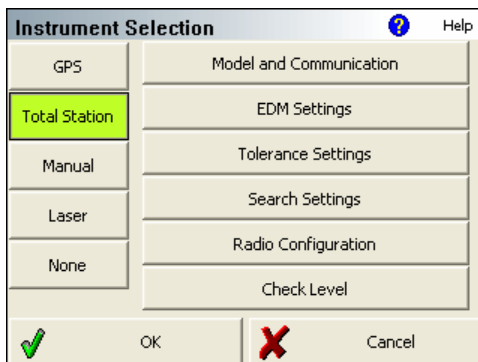
Communication Parameters

1. Select Menu, ENT, 4 (Data com), 1 (Select device), 2 (Serial) and at the prompt “Serial ON?”, select ENT.
2. Now confirm that the com settings = 1.8.0.9600 and press ENT to continue.
3. When prompted for “Table No.=”, select ENT.
4. When prompted for “Reg key?”, select ENT.

Checking Settings in FieldGenius

Please ensure you have FieldGenius 2005 Version 1.2 installed.

Go to the Main Menu → Settings → Instrument Settings → Total Station



Model and Communication

Make certain you set FieldGenius to equal the following:

Model and Communication ? Help

Total Station

Make: Trimble Model: 5600

Connect to Instrument

Port: COM1 Data Bits: 8

Baud Rate: 9600 Stop Bits: 1

Parity: None

Cancel

EDM Settings

Make certain you set FieldGenius to equal the following:

EDM Settings ? Help

EDM Settings

Mode: IR Standard

Time Out(s): 10

Use Default

Minimum: 0m

Maximum: 10000m

Guide Light: High

Prism Offsets (mm)

Foresight: 0.0

Backsight: 0.0

Set Instrument

Reflectorless Settings

Std Dev: 0.010m

Cancel

Tolerance Settings

These are tolerances used during multisets, please confirm that the values meet your desired specifications.

Search Settings

These will be grayed out because they don't apply when connected directly to the instrument.

Search Settings ? Help

Search Mode: None

Search Window Range

Horizontal: 30°00'00" Vertical: 30°00'00"

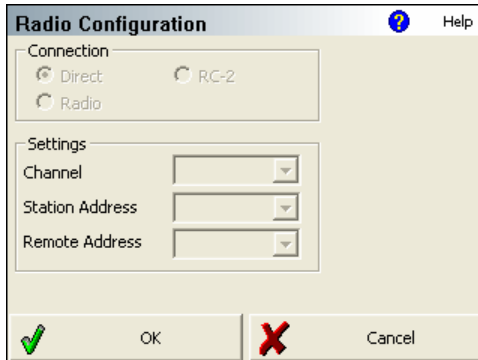
Search Window Center

Horizontal: 0°00'00" Vertical: 90°00'00"

Cancel

Radio Configuration

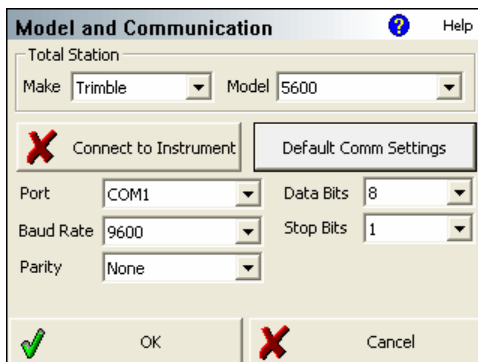
These will be grayed out because they don't apply when connected directly to the instrument.



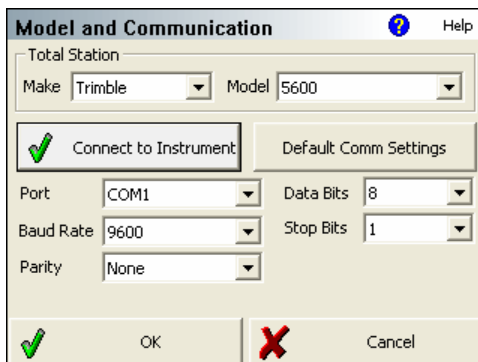
Connecting FieldGenius to your Trimble

Once you've confirmed all your settings, and gone through the startup process on your instrument, you can do the following to begin surveying with FieldGenius.

1. Make sure you're at your measure screen on your instrument. The measure screen is where the HA and VA is displayed.
2. Make sure you have FieldGenius connected to your instrument.
3. From the Model and Communication screen, select the Connect to Instrument button.



After you press the continue button you will see some reminders of things to check before you move on, press Continue when ready.



You will now see a green check mark on the Connect to Instrument button.

Press Ok to continue. You are now connected and ready to start surveying.