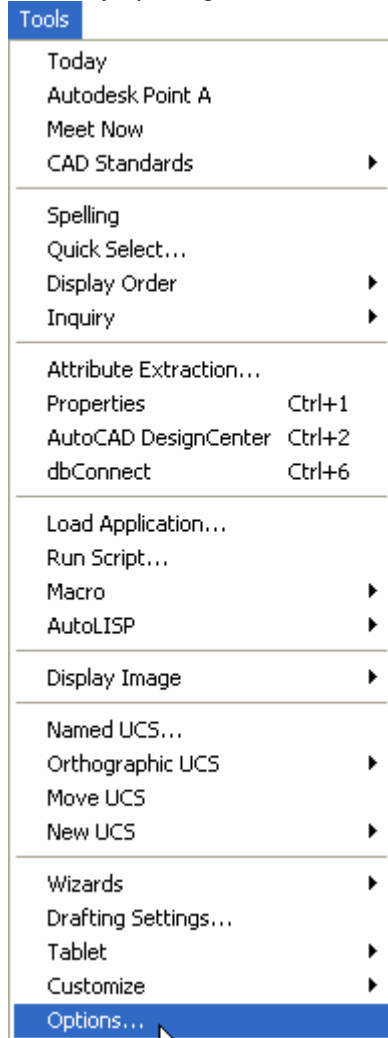


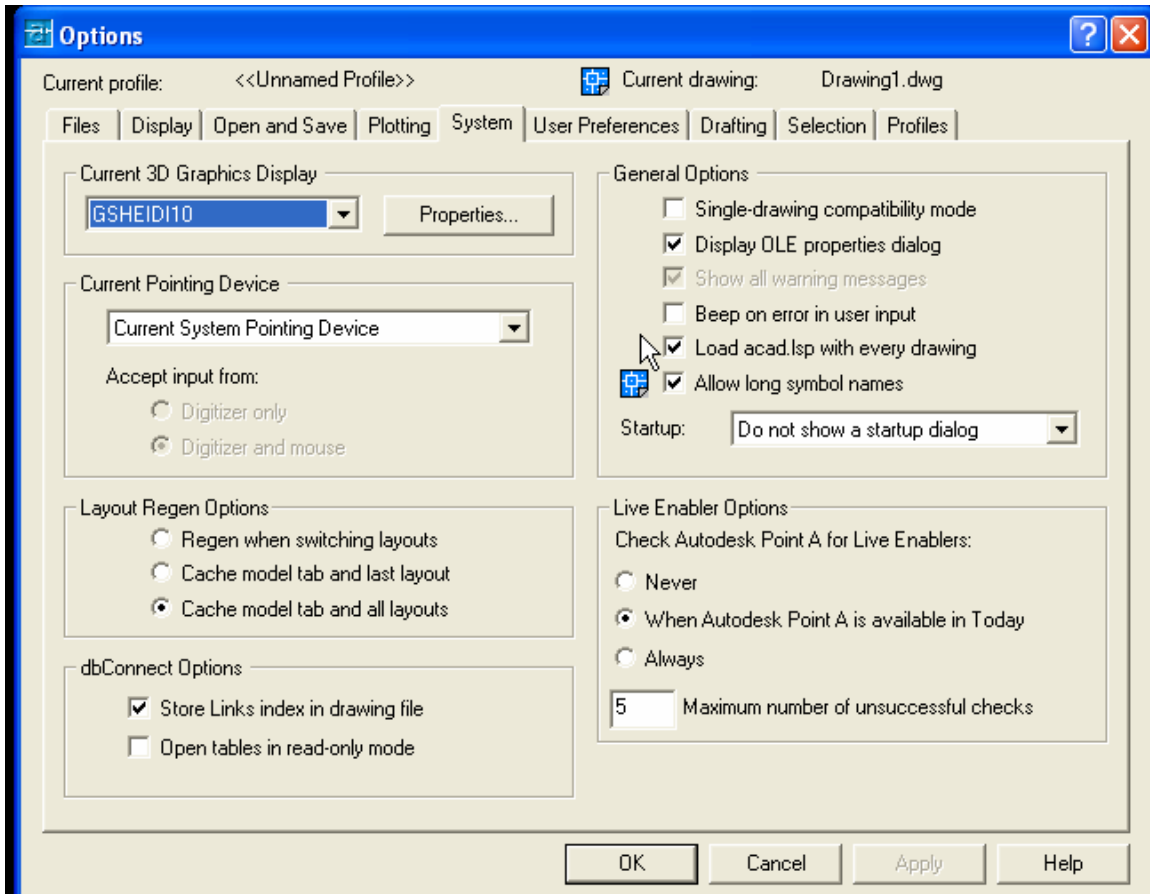
## “Unrecognized Command” when using InCAD Modeling Functions:

**MicroSurvey INCAD loads some LSP routines in order to perform most modeling commands. AutoCAD must be configured to allow this.**

Do so by opening the Tools menu and picking on “Options:”



Ensure that there is a check in the “Load acad.lsp with every drawing” checkbox under the system tab:



**Restart the program and reopen the drawing so this change will take effect.**