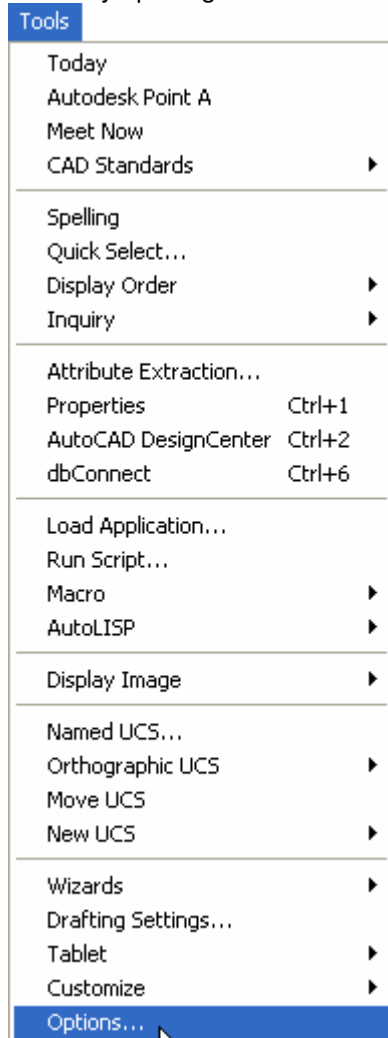


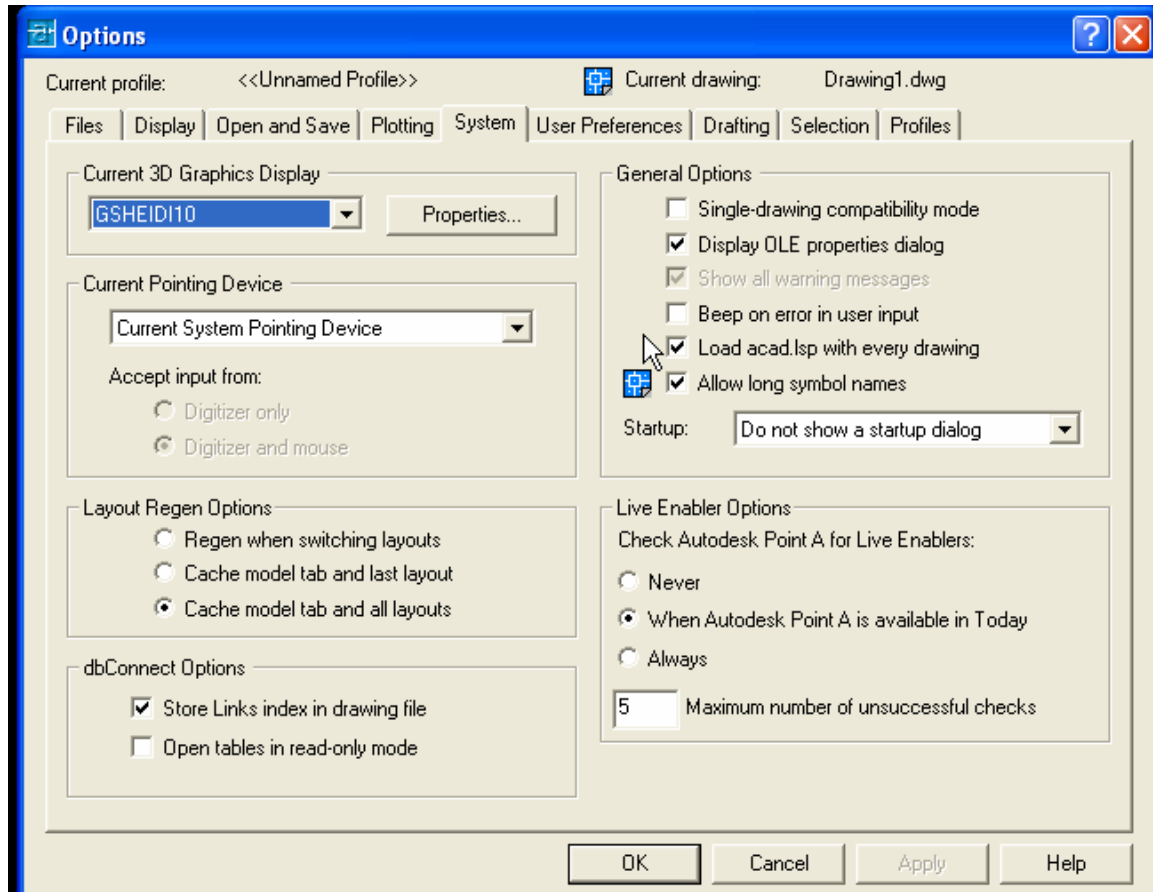
“Unrecognized Command” when using InCAD Modeling Functions:

MicroSurvey INCAD loads some LSP routines in order to perform most modeling commands. AutoCAD must be configured to allow this.

Do so by opening the Tools menu and picking on “Options:”



Ensure that there is a check in the “Load acad.lsp with every drawing” checkbox under the system tab:



Restart the program and reopen the drawing so this change will take effect.