

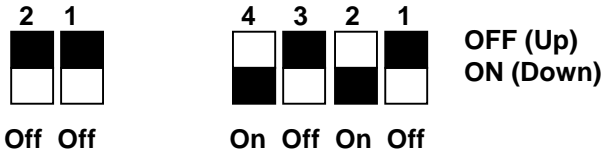
# Sokkia SRX Setup

## Robotic Connection Settings

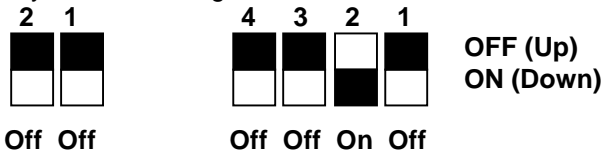
You must be using FieldGenius 2007 v3.1 or newer, or Evidence Recorder 4.1 or newer.

1. Turn on and level the instrument, and open the cover over the RC-TS3 sensor.
2. Check the DIP Switches under the battery cover on the RC-PR3:

If you will be using a cable connection between the data collector and the RC-PR3:



If you will be using a Bluetooth connection between the data collector and the RC-PR3:



3. Turn on the RC-PR3.
4. Confirm the Communication Parameters on the instrument:
  - a. Press the “Settings” button on the keypad to go into the Settings menu.
  - b. Press the “5 Comms” button on the touch screen (or press the “5” button on the keypad) to go into the Communication Settings screen.
  - c. Click on the “Comms setup” tab on the touch screen and select the following settings:
 

Comms mode:	Bluetooth
Checksum:	No
Controller:	2Way+Remote
  - d. Click on the “Bluetooth” tab on the touch screen and select the following settings:
 

Mode:	Slave
Link:	(blank)
Authentication:	No
Passkey:	****
  - e. Press the OK button on the touch screen (or press the “F4” button on the keypad) to go back to the Settings menu.
  - f. Press the Back button on the touch screen (or press the “F4” button on the keypad) to go back to the measure screen.
5. On the data collector, start FieldGenius or Evidence Recorder, and start or open a project.
6. Press the Main Menu button | Settings | Instrument Selection | Total Station.

7. On the Model and Communication screen, Select Sokkia SRX and press Use Default Communication Settings. If you are using a Bluetooth connection between the data collector and the RC-PR3 unit, select the appropriate COM port.

Model and Communication

Total Station

Make: Sokkia Model: SRX

Status: **Not Connected**

Connect to Instrument Use Default Communication Settings

Port: COM1 Data Bits: 8

Baud Rate: 9600 Stop Bits: 1

Parity: None

OK Cancel

8. Specify the EDM Settings and Prism Offsets you wish to use on the EDM Settings screen:

EDM Settings

EDM Settings

Mode: IR Fine

Time Out(s): 10

Use default time

Minimum: 0m

Maximum: 10000m

Guide Light: High

Prism Offsets (mm)

Foresight: 0.0

Backsight: 0.0

RL: 0.0

Set instrument to zero

Reflectorless Settings

Std Dev:

OK Cancel

9. Specify the Multiset Tolerances you wish to use on the Tolerance Settings screen (FieldGenius only, this screen does not exist in Evidence Recorder):

Measurement Tolerance

Horizontal Angle Tolerance (sec)

30.0

Vertical Angle Tolerance (sec)

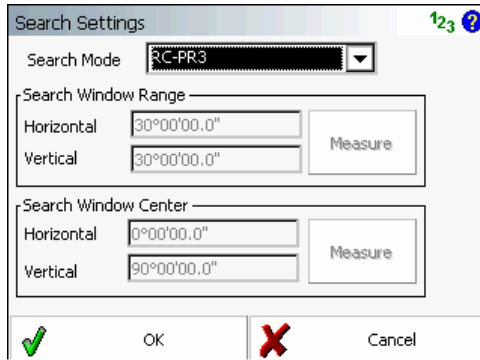
30.0

Distance Tolerance

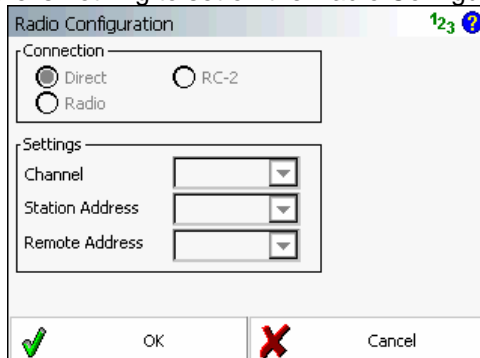
0.010m

OK Cancel

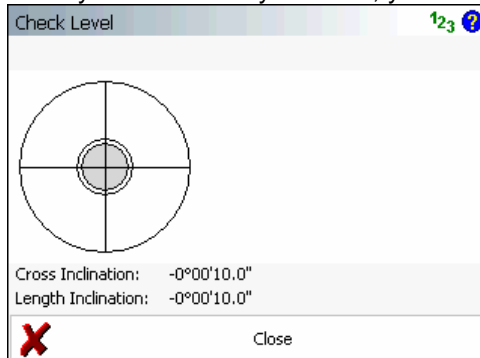
10. Specify the Search Settings you wish to use on the Search Settings screen:



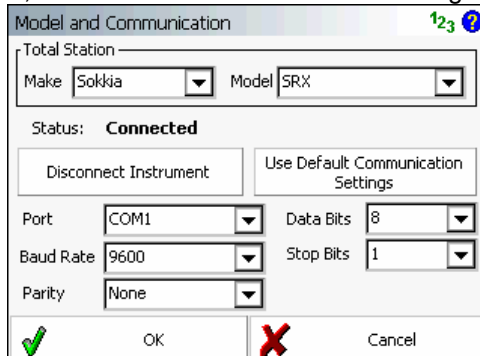
11. There is nothing to set on the Radio Configuration screen.



12. Go back to the Model and Communication screen, and press the “Connect to Instrument” button. If you successfully connect, you will see the Check Level screen.



13. When you Close the Check Level screen, you will see the Model and Communication screen again, with a “Status: **Connected**” message.



14. Have Fun!