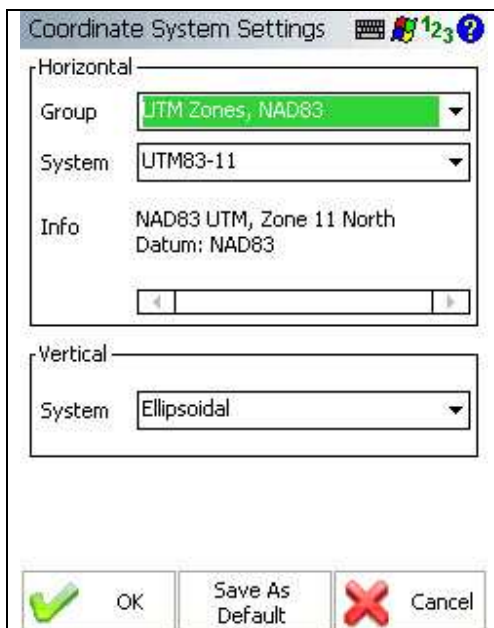


## Altus APS3 – Configure Rover for Radio, NTRIP or GPRS RTK Link

You must be using FieldGenius 2010 v4.3.0 or newer.  
This document was written using FieldGenius 2010 v4.3.0.11

### Coordinate System Settings

#### Coordinate System Settings



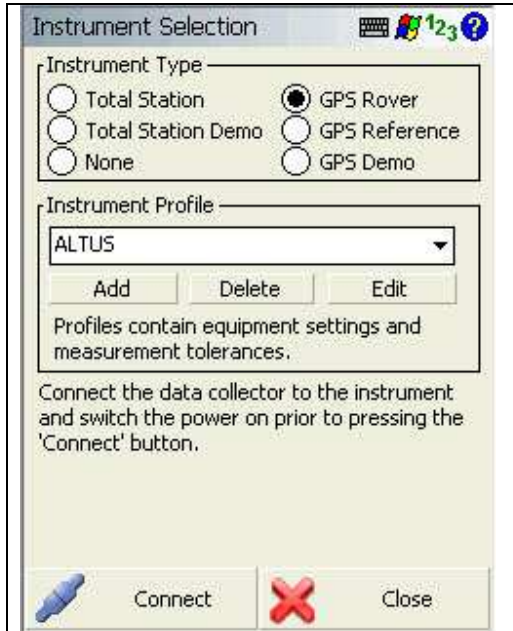
Access this screen by going to Start | Settings | Coordinate Systems.

Choose the datum settings for the area the GPS receiver is in. Note: You usually need to extract the grid (geoid) files for your area before using FieldGenius.

To do this, use the Datum Grid Editor that is available on the FieldGenius CD that was shipped with FieldGenius or download it from our Support Helpdesk.

## Instrument Selection Settings

### GPS Reference Profile

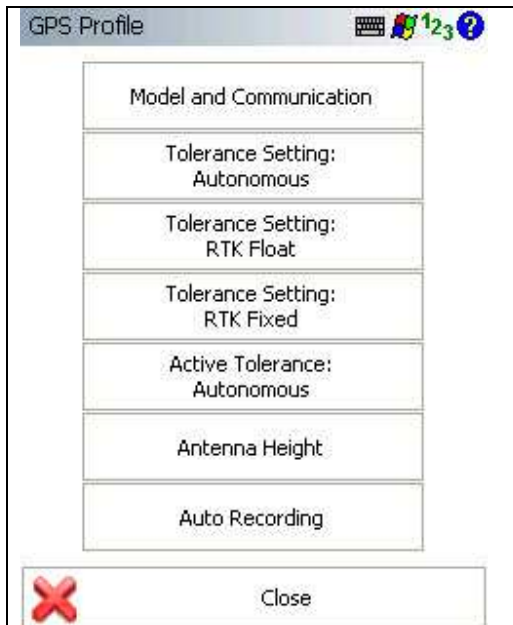


Access this screen by going to Start | Settings | Instrument Selection.

To Add or Edit a GPS Reference profile that you created during your Instrument Profile Setup

You should now press Edit it to access the profile settings.

### GPS Profile




#### GPS Profile Settings

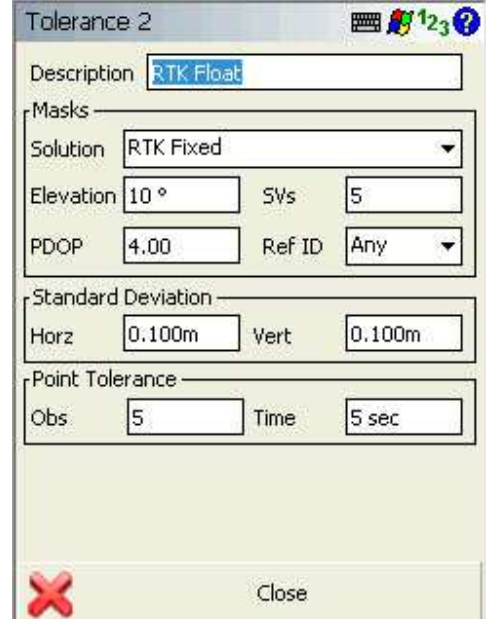
In the following menus you will be able to setup or modify your Model and Communication settings, the three various Tolerance Setting Modes, your Antenna Height and the Auto recording feature.

You can return to this menu after each individual selection by tapping the “close” button


To begin editing your profile, tap on the Model and Communication

|   |   |
|---|---|
|  | <p>Check your Altus Serial Number.<br/>         Choose the APS-3 model if your serial number is lower than 20XXX<br/>         Choose the APS-3 Rev 2 model if your serial number is higher than 20XXX</p> <p>Choose your desired communications port COM 1 through COM 10 or Bluetooth connection. Consult your data collector setup guide to find out which COM port your device works best with, and match this setting.</p> <p>Typical serial cable connection will use COM 1.</p> <p>In this example we're using a Bluetooth connection. If you have not already done so you can initiate a Bluetooth connection search by tapping "Bluetooth Search". This will allow you to find all active devices within connection range.</p> <p>Chose "<b>Connect</b>" to establish your connection.</p> <p>Once connected it will skip the instrument settings menu below taking you directly into the "Link Configure Menu"</p> |
|---|---|

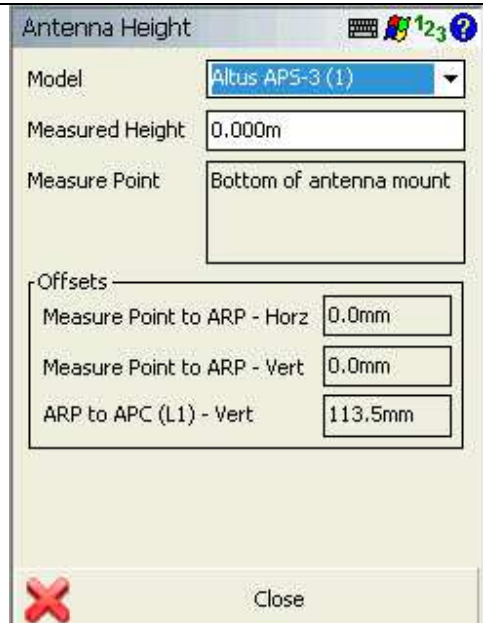
### Tolerance Modes 1-3

|   |  |
|---|--|
|  | <p>There are three different tolerance modes that can be set.</p> <p>Configure the three tolerance modes based on your needs.</p> <p>Once connected you can switch between them on the GPS Control menu.</p> |
|---|--|



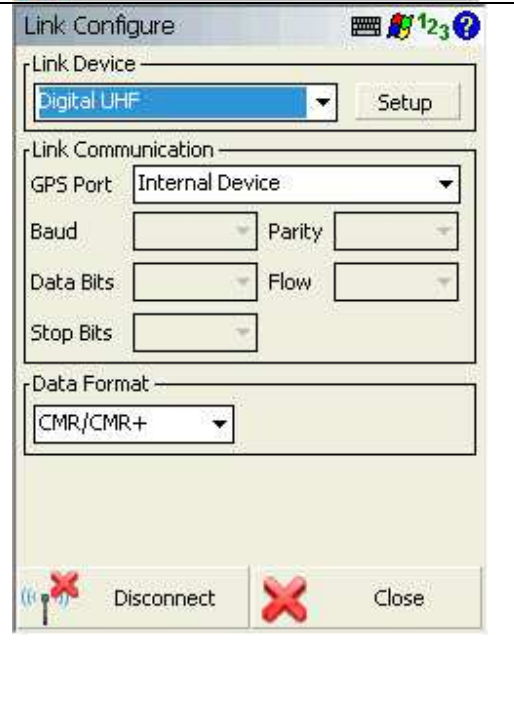
## Active Tolerance Mode

|  |   |
|--|---|
|  | <p>Under the active tolerance menu you can set the default tolerance mode when you first connect to the rover.</p> <p>Once connected you can switch between them on the GPS Control menu.</p> |
|--|---|

## Antenna Height

|   |   |
|---|---|
|  | <p>Select the correct antenna model from the list.</p> <p>You should always confirm the antenna offsets to those published for your receiver.</p> <p>Select User Defined to enter your own offsets if required.</p> |
|---|---|

## Correction Link

|  |  |
|--|--|
|   | <p>To continue, you must now close several screens until you see the "Connect" button. Connect to your rover.</p> <p> You can access the Link Configuration menu from the "Instrument Settings" Icon on the Map Screen</p> <p><b>Note: most of the following menus can only be accessed once you've connected to your instrument.</b></p> <p>From this menu you will be able to affect all of your Modem and Radio configurations/settings</p> <p>Tap on the "Link Configure" menu to begin.</p>  |
|  | <p>Altus APS3 units can communicate via three methods: Spread Spectrum (900MHz) radio, Digital UHF internal radio or be set up for GSM/GPRS modem RTK network. Choose these settings in the Link Device drop down menu.</p> <p>If you wish to setup a UHF radio connection to a base for a base/rover setup please choose Digital UHF.</p> <p>See the next three examples for info on setting each of those up. It is always recommended you confirm all settings with your dealer or equipment guide.</p> <p>From this menu you can also choose the Message type/Data Format you wish to use such as RTCM, CMR or other.</p> <p>Press the <b>Setup</b> button to set the <b>Radio Settings</b> or your mobile <b>Network Settings</b></p> |


## Radio Settings

|  |  |
|--|--|
|  | <p>Here you can set your radio Frequency</p> <p><b>*CRITICAL STEP:</b> If you are using a Base/Rover setup both the base and rover must be set to the same frequency. Altus UHF radio range is 450-470MHZ- choose your channel from the dropdown menu</p> <p>You can choose your Protocol type from the dropdown menu provided. Altus default is Simplex.</p> <p>Should you choose to scramble your radio signal you can choose anywhere in the range from 1 to 255</p> <p>You can adjust your desired radio wattage from the drop down menu as required. Altus radios can be set up to 1 watt</p> |
|--|--|

## Network Settings – NTRIP

|  |  |
|--|--|
|  | <p><b>Network Settings NTRIP</b></p> <p>If you choose “mobile” under the link device in your Link Configuration menu and click Setup you will find this menu.</p> <p>Choose NTRIP as the Connection Method at the top of the screen.</p> <p>Under Network Options, enter the login information which is used to connect your modem to the internet.</p> <p>If you have a password it can be entered in the UserID2 field.</p> <p>(If required, scroll down so you do not miss any settings further down the page).</p> |
|--|--|

## Network Settings GPRS

| Mobile Settings  |         |
|--|---------|
| Connection Method  | GPRS    |
| <b>Network Options</b>   |         |
| Model  | Default |
| PIN Code   |         |
| Internet User ID   |         |
| Internet Password  |         |
| Internet APN (GSM)   |         |
| <b>GPRS Options</b>  |         |
| Network Type   | None    |
| IP Address   |         |
| TCP/IP Port  |         |
|  Close |         |

**Network Settings GPRS**

Select GPRS as the Connection Method at the top of the screen.

Under Network Options, enter the login information which is used to connect your modem to the internet.

If you have a password it can be entered in the UserID2 field.

(If required, scroll down so you do not miss any settings further down the page).